

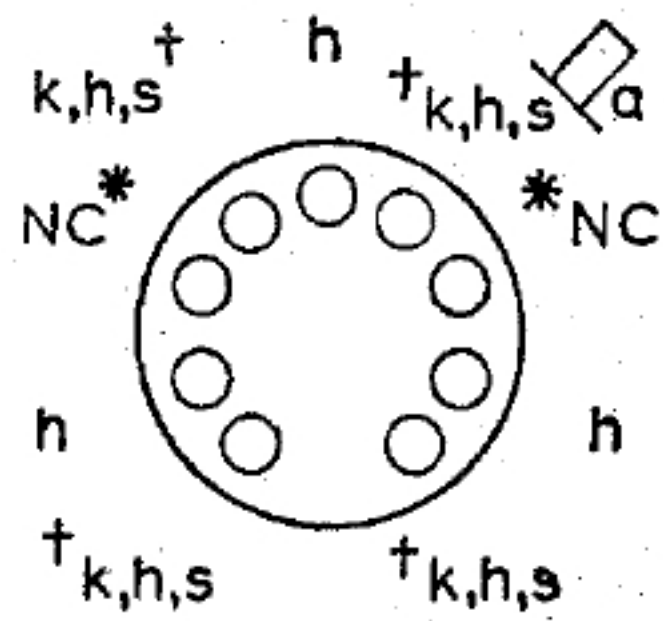
# TY86F

Vh	7.4	V
Ih	77	mA
Pulsed input		
P.I.V. max.	22	kV
Iout max.	800	$\mu$ A
Ia (pk) max.	40	mA
C max.	2000	pF

†Pins 1, 4, 6 and 9 may be used for fitting an anti-corona shield.

\*Pins 3 and 7 may only be connected to points in the heater circuit and must not be earthed.

High voltage half-wave rectifier.



TY86F

B9A